

HOLTEC PROPRIETARY

D

C

B

A

HOLTEC PROPRIETARY

HOLTEC PROPRIETARY

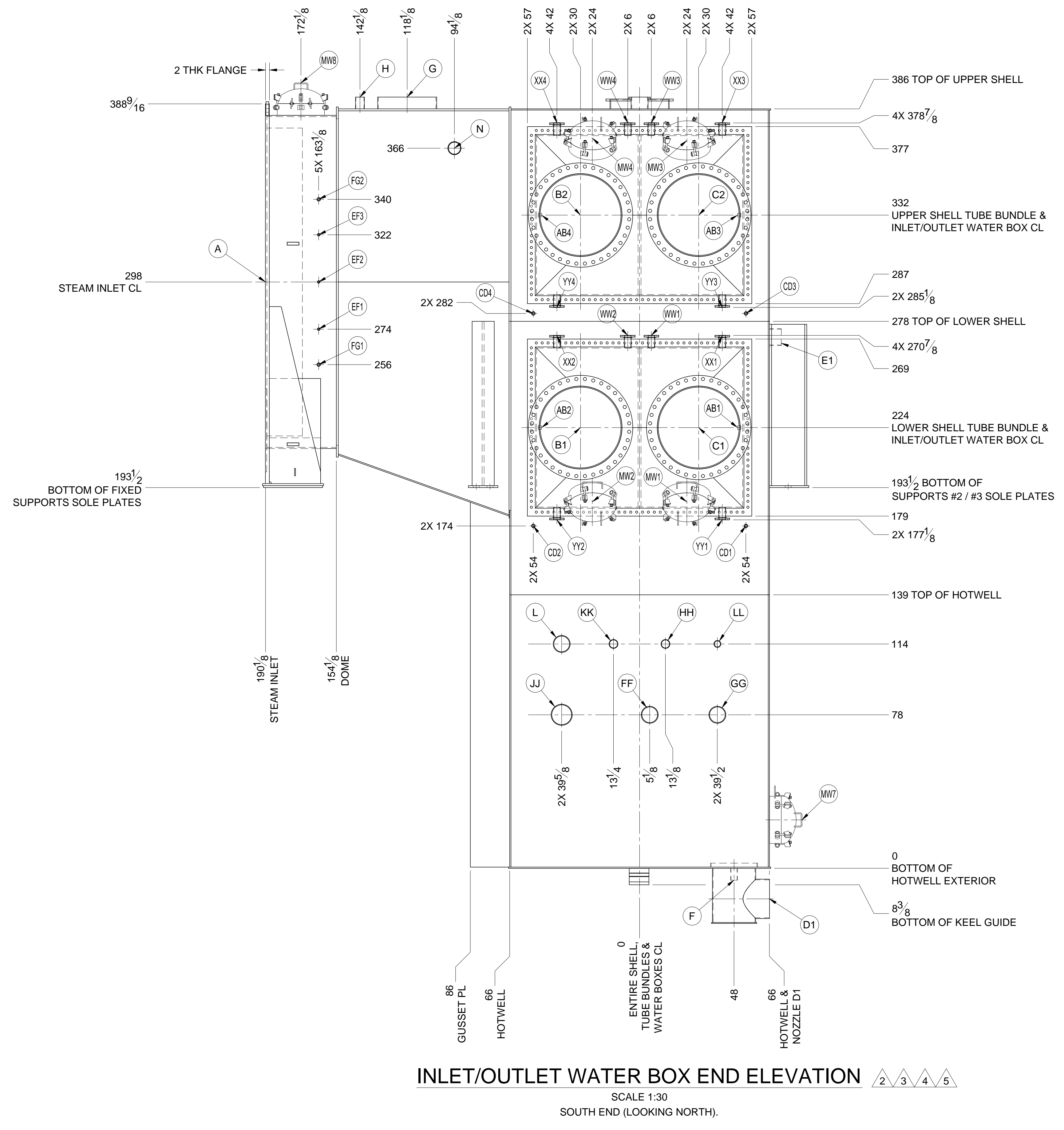
D

C

B

A

HOLTEC PROPRIETARY



**INLET/OUTLET WATER BOX END ELEVATION**  
 SCALE 1:30  
 SOUTH END (LOOKING NORTH).

REV	DESCRIPTION	DRAWN	DATE APVD	VIR #
7	REVISED ELEVATION OF NOZZLES RD1-RD2, REVISED CLEANING & COATINGS NOTE 3	TP	JUL 30, 2012	304570
6	REVISED MATERIAL OF NOZZLE TT	TP	APR 12, 2012	233277
5	REVISED CLEANING & COATINGS NOTE 1, ADDED GUSSET PLATES	TP	APR 5, 2012	448459
4	REVISED PER CLIENT COMMENTS	TP	FEB 29, 2012	601409
3	REVISED PER CLIENT COMMENTS, LOCATED NOZZLES AB-FG, UPDATED NOZZLE SCHEDULE	TP	JAN 20, 2011	624298
2	REVISED TO INCLUDE MAJORITY OF NOZZLES (LESS THOSE FOR INSTRUMENTATION)	TP	DEC 9, 2011	840102
1	RELEASED FOR SECOND REVIEW BY CLIENT AFTER 98" DEPTH ADDED TO HOTWELL	TP	NOV 4, 2011	779872
0	RELEASED FOR INITIAL REVIEW BY CLIENT	TP	SEP 30, 2011	183664

**REVISIONS**

THIS DRAWING IS THE INTELLECTUAL PROPERTY OF HOLTEC INTERNATIONAL. IT IS PROVIDED TO THE RECIPIENT UNDER THE EXPLICIT CONDITION THAT IT WILL NOT BE DUPLICATED IN WHOLE OR PART, OR GIVEN TO OTHERS WITHOUT WRITTEN CONSENT OF HOLTEC INTERNATIONAL.

 <b>HOLTEC INTERNATIONAL</b> POWER PLANT COMPONENTS DIVISION 555 LINCOLN DRIVE WEST MARLTON, NJ 08053 (USA)		PROJECT / CLIENT <b>GAINESVILLE RENEWABLE ENERGY CENTER, FAGEN, INC.</b>
CLIENT JOB NO. 104009	ENGINEER ZACHRY ENGINEERING CORPORATION	TITLE GENERAL ARRANGEMENT DRAWING FOR STEAM SURFACE CONDENSER
CLIENT P.O. NO. 554652	LOCATION GAINESVILLE, FLORIDA	SIZE D
CLIENT DOC. NO. O-A014200-SPCG481116	PROJECT NO. 2135	DRAWING NO. 8284
FILE PATH: G:\PROJECTS\2135-0-DRAWINGS\GAI\8284_REV 7	SHEET 1 OF 8	REV. 7

UNLESS OTHERWISE SPECIFIED:  
 ALL DIMENSIONS ARE IN INCHES.  
 BRACKETED [ ] DIMENSIONS ARE IN mm.  
 DO NOT SCALE DRAWING.  
 INTERPRET DIMENSIONING AND TOLERANCING PER ASME Y14.5M-1994.  
 TOLERANCES PER APPLICABLE H.E.I. STANDARD.

REVISION IDENTIFIER  
 NOZZLE IDENTIFIER  
 THIRD ANGLE PROJECTION

M014200-CND40001 501 R7

NO EXCEPTIONS NOTED | Release for manufacture